



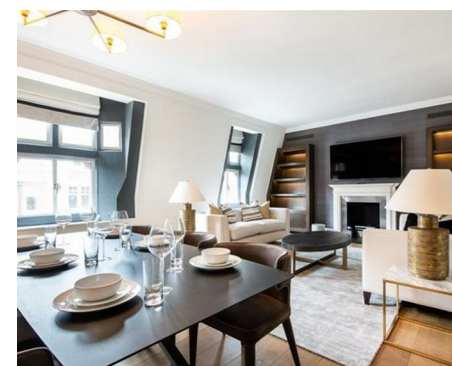
Let **UK** Home

3 Bedrooms

Flat

Located in London

£21,233 Per Month



[info@letukhome.co.uk](mailto:info@letukhome.co.uk)

<https://www.letukhome.co.uk/>

01795 358 886



# 65 Duke Street, Mayfair London

W1K 5NX



Let UK Home are delighted to offer this spectacular, interior designed three-bedroom, north west facing Mayfair apartment, located on famous Duke Street, just off Oxford Street.

This second-floor luxury apartment has been finished to the highest of specifications using the finest materials and latest "smart home" technology. The apartment comprises an open-plan living area with a beautiful bespoke kitchen with integrated lighting, Gaggenau appliances along with natural oak flooring. The bathrooms are created out of Galina limestone and silver travertine which helps create a sensual ad relaxing atmosphere.

The Grade II listed building holds it classic original features and consists of a lift, a dedicated on-site concierge and storage lockers for all apartments.

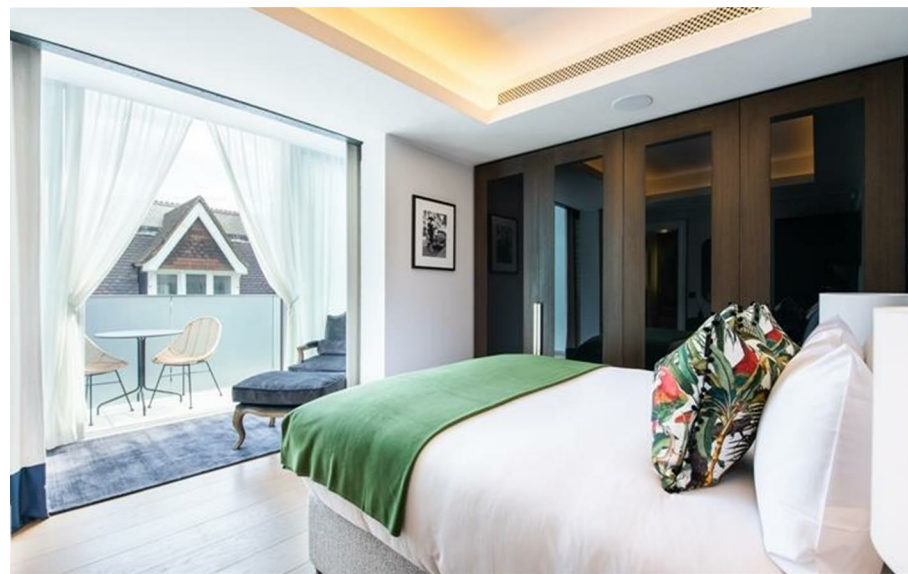
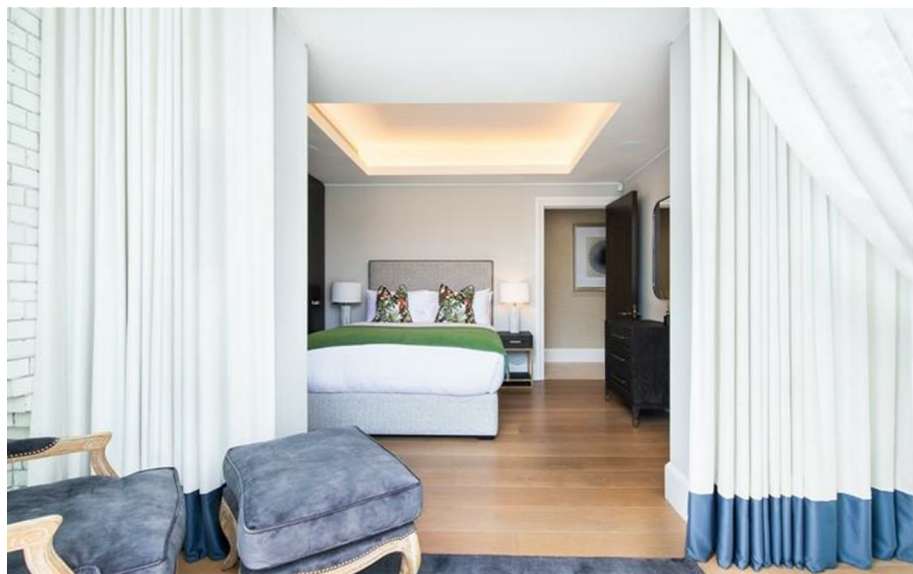
With its central location and excellent public transport facilities, Mayfair allows easy access to the rest of London. Nearby underground stations include Bond Street (Central and Jubilee lines), Marble Arch (Central Line), Green Park (Jubilee, Piccadilly and Victoria lines) and several regular and varied bus services further improve accessibility.

# 65 Duke Street, Mayfair London

£21,233 Per Month



- 3rd Floor
- Newly refurbished apartment including new modern furniture
- CCTV
- Lift Service
- 3-minute walk to Selfridges
- 24-hour emergency helpline & service





THIRD FLOOR



Let **UK** Home

3F 2 Eastbourne Terrace

Paddington

London

W2 6LG

01795 358 886

info@letukhome.co.uk

**Council Tax Band: H**

**Local Authority:**

Agents Note: Whilst every care has been taken to prepare these particulars, they are for guidance purposes only. All measurements are approximate and are for general guidance purposes only and whilst every care has been taken to ensure their accuracy, they should not be relied upon and potential buyers/tenants are advised to recheck the measurements.

Energy Efficiency Rating		Current	Potential
Very energy efficient - lower running costs			
(92 plus)	A		
(81-91)	B		
(69-80)	C		
(55-68)	D		
(39-54)	E		
(21-38)	F		
(1-20)	G		
Not energy efficient - higher running costs			
England & Wales		EU Directive 2002/91/EC	

<https://www.letukhome.co.uk/>